
External factors and economic growth in Tunisia: ARDL approach with structural change analysis

Saif Eddine Ayouni
University of Sousse, Tunisia, saifayouni2000@yahoo.fr

Ramzi Farhani
University of Sousse, Tunisia

Mekki Hamdaoui
University of Sousse, Tunisia

Follow this and additional works at: <https://journals.usek.edu.lb/aebj>



Part of the [Business Commons](#), and the [Economics Commons](#)

Recommended Citation

Ayouni, Saif Eddine; Farhani, Ramzi; and Hamdaoui, Mekki (2022) "External factors and economic growth in Tunisia: ARDL approach with structural change analysis," *Arab Economic and Business Journal*: Vol. 14 : Iss. 2 , Article 1. Available at: <https://doi.org/10.38039/2214-4625.1013>

This Research Article is brought to you for free and open access by Holy Spirit University of Kaslik Journals. It has been accepted for inclusion in Arab Economic and Business Journal by an authorized editor of Holy Spirit University of Kaslik Journals.

RESEARCH ARTICLE

External Factors and Economic Growth in Tunisia: ARDL Approach With Structural Change Analysis

Saif E. Ayouni ^{a,*}, Ramzi Farhani ^b, Mekki Hamdaoui ^{b,c}

^a Faculty of Economic Sciences and Management, Department of Quantitative Methods, University of Sousse, Rue Khalifa El Karoui Sahloul, 4002, Sousse, Tunisia

^b Faculty of Economic Sciences and Management, Department of Economics, University of Sousse, Rue Khalifa El Karoui Sahloul, 4002, Sousse, Tunisia

^c Faculty of Economic Sciences and Management, Modeling, Financing and Economic Development (MOFID-LR21ES28), University of Sousse, Rue Khalifa El Karoui Sahloul, 4002, Sousse, Tunisia

Abstract

This paper examined the effect of external factors on economic growth in Tunisia. The economic analysis was carried out using recent quantitative technique of annual time series data from 1976 to 2017. Based on co-integration test with unknown structural breaks and ARDL bound testing we investigated importance of each factor in stimulating economic growth. Our results show that in the long run FDI does not affect economic growth. Remittances and imports negatively affect economic growth. Exports promote economic growth such that a 1% increase stimulates economic activity by 0.702%. In the short term, our estimates emphasize a structural break in 1988 linked to the structural adjustment program. Likewise, FDI does not have a significant effect on economic growth while remittances and imports slow economic growth significantly at the conventional level. On the other hand, exports form a relevant engine of economic growth. So, our conclusions imply that political decision-makers in Tunisia must guarantee certain level of training and infrastructure to ensure the gain of transfers of new technologies and experiences related to the FDI. Thus, Tunisia must encourage peoples living aboard to create new investment opportunities instead of just supporting their families for consumption. In addition, the state must develop financial system capable of transferring funds for investment in order to better benefit from remittances. Finally, the government must restrict import of consumer goods and allow import of equipment and machinery goods that promote production and economic growth.

Keywords: Economic growth, External factors, Breakpoints, ARDL

1. Introduction

Tunisia, as a developing country, has tried to achieve and maintain long-term sustainable economic growth since independence. There are several factors determining economic growth, which can be divided into domestic, and external according to economic theory. Domestic determinants such as sound macroeconomic policies, good governance, human capital, political stability and national saving have been validated by theory as engine of economic growth (Narayan & Smyth, 2004; Romer, 1986). However, there are external factors such as remittances, foreign direct

investment, imports and exports that are able to influence the extent of economic growth, especially for small developing economies (Chen & Jayaraman, 2016; Makun, 2018).

Remittances can help family members left behind and reduce poverty, support beneficiaries to invest in agricultural activities and other small projects, help families protect themselves against income shocks and pay education and health expenses and increases foreign exchange reserves in countries of origin ensuring more liquidity and funding for investment activities which stimulates economic growth. It is also supported that FDI is favorable to economic growth through its externalities and spillovers and represents

Received 24 April 2022; accepted 25 April 2022.
Available online 30 June 2022

* Corresponding author.

E-mail addresses: saifayouni2000@yahoo.fr (S.E. Ayouni), ramzi.farhani@gmail.com (R. Farhani), mekkihamdaoui@yahoo.fr (M. Hamdaoui).

<https://doi.org/10.38039/2214-4625.1013>

2214-4625/© 2022 Holy Spirit University of Kaslik. This is an open access article under the CC-BY-NC-ND license (<http://creativecommons.org/licenses/by-nc-nd/4.0/>).

an important external factor stimulating long-term growth (Easterly et al., 1994; Lucas, 1988; Romer, 1986; Solow, 1956). New technologies, job creation, increased research and development and domestic human capital development are the pillars of productivity. However, many small developing economies such as Tunisia suffer from the lack of resources needed for their productivity and overall performance in economic growth. This lack of resources can explain and justify FDI inflows to fill these deficits in small developing economies.

According to the endogenous growth theory, four key mechanisms through which foreign direct investment affects economic growth. First, FDI fills the capital gaps facing many developing countries. In addition, FDI reduces the foreign exchange deficit by entering foreign capital directly and indirectly through export earnings. This increases the country's foreign exchange earnings and its ability to pay its external debt and improve its export competitiveness. Likewise, FDI increases government revenues through direct and indirect taxes of foreign firms. These taxes can be huge if there are many FDI inflows and the government can use them to finance development projects such as infrastructure and various other expenses that enhance economic growth (Todaro & Smith, 2006). Finally, FDI is able to improve the knowledge through the transfer of skills and vocational training and brings new technological improvements to the economy.

The literature examining trade openness and growth has also narrowly focused on the impact of imports on economic activity (Chaudhary et al., 2007; Jawaid, 2014). Imports of capital goods, machinery and intermediate production inputs improve growth through the diffusion of new technologies (Grossman & Helpman, 1991; Mazumdar, 2001). They argued that economies open to trade grow faster since they can invest in the necessary imported capital goods. Indeed, some imported goods are important for countries that are in the early stages of development. New technologies, machinery and essential intermediate production inputs such as petroleum are essential for domestic enterprises, which can only be available through imports. Similarly commercial theory has focused on export as a factor promoting economic growth since it allows increase the international reserves necessary for the imports of the goods necessary for the production and the defense of the exchange rate.

Recent social and economic researches suggest that high economic growth rate improves education and human capital formation, which are fundamental to reduce unemployment and poverty (Marques et al., 2018; Nourzad & Powel, 2003). Thus,

a developed and prosperous society is certainly the ultimate goal of all economic activities. This work examines effect of external factors on economic growth in the case of Tunisia. To achieve this objective, annual observations of exports, imports, remittances, foreign direct investment and economic growth from 1976 to 2017 were used. The econometric methodology applied is the Autoregressive Distributed-Lag (ARDL) bounds testing approach developed by Refs. (Pesaran & Shin, 1999; Pesaran et al., 2001). Developing countries, including Tunisia, receive a very large amount of funds from growing number of emigrants living and working abroad whose contribution to economic growth is determined by several factors, namely the size of the economy and the level of financial development. Indeed, in 2016 the *National Institute of Statistics* in Tunisia announced that the volume of remittances by Tunisians residing abroad and their contributions in kind and in cash is the equivalent of 5% of GDP. Similarly, these transfers contribute up to 20% of national savings and have played an important role in the regulation of the balance of payments by absorbing about 37% of the deficit of the trade balance. Foreign direct investment in Tunisia, mainly in the tourism and textile sector, was impressive in the early 1980s. However, due to recurring political instability, amplification of terrorism, larger part of informal sector, corruption and weak global economic conditions, there has been a lack of manufacturing-related investment leading to reduced foreign investment. In addition, exports also play a significant role in the domestic economy and overall economic growth of developing countries.

In this regard, it is essential to examine the short and long-term relationship between exports, imports, remittances, foreign direct investment and economic growth that would be useful for government and policy decisions. Three things stand out in the literature. First, there are very limited studies of small developing economies. Second, the literature provides mixed evidence about long-term economic relationships between external factors and economic growth. Thirdly, scarcely any study has examined the effect of these external factors on economic growth jointly in the case of a small developing country, hence the importance of undertaking this empirical study of external factors and economic growth. **So, our contribution consist on distinguishing between short run and long run effect of these factors taking account of break points which was not the case of previous works.** We show that Tunisian government should undertake appropriate political strategies with regard to these

external factors taking into account their importance for economic growth not only in Tunisia, but also in other similar economies.

The rest of this paper is organized as follows: The first section presents a review of the literature. The second section describes the model specification and the econometric method. The results and discussions of the study are presented in the third section. The last section provides the conclusion of the paper with strategic recommendations.

2. Literature review

The issue of the relationship between external factors and economic growth has long attracted the attention of economists. For example, the relationship between remittances and economic growth is widely discussed in the literature. The results show that there is no consensus regarding the long-term impact of remittances on economic growth. For example (Barajas et al., 2009), supported a subordinate or negligible effect of remittance on economic growth. This could be linked to the financial development of the recipient country, but the direction of the link remained uncertain. Empirical studies which show that the link between remittances and growth is positive are numerous (Jouini, 2015; Kumar, 2013; Nwaogu & Ryan, 2015) and (Imai et al., 2014). These studies assume that remittances improve the well-being of immigrant family members and help them invest in many small-scale projects. They thus help to reduce poverty; help families fight income shocks and finance their education and health. They also increase the economy's foreign exchange reserves, which increases liquidity for growth-friendly activities and investment projects. In addition (Bahadir et al., 2018; Meyer & Shera, 2017), have studied the impact of remittances on economic growth. They showed that economies with a developed financial system experience a significant and positive effect of remittances on growth. Similarly (Chen & Jayaraman, 2016), examined this type of potential link and showed that despite the existence of a positive relationship between remittances and economic growth, their interaction with the financial system is negative, implying that their marginal effect on growth is diminishing with financial development. Similarly (Jouini, 2015), investigated the causal links between remittances and economic growth for Tunisia over the period 1970–2010 taking into account potential conditional effect via investment and financial development. Using an Autoregressive distributed lag (ARDL) approach he show that there is a short run significant relationship

among remittances and economic growth but concludes a limited links in the long-run.

The impact of foreign direct investment (FDI) on growth remains a thorny issue for researchers and policymakers. At the theoretical level, it has been argued, as indicated in the introduction, that FDI promotes growth. However, existing empirical studies have left researchers and policymakers perplexed as these studies do not seem to establish a strong link between these variables. The idea that FDI can positively affect economic growth is widely defended in economic theory (Almfraji & Almsafir, 2014; Khathlan, 2012). In addition, many empirical works supported a positive effect of FDI on economic growth such as (Borensztein et al., 1998). They prove that this relationship is conditioned by factors such as the level of domestic human capital, trade openness and domestic investment. However (Belloumi, 2014), analyzed the relationship between FDI, trade openness and economic growth for Tunisia considered us one of countries suffering from unemployment problems and lack of technological progress. He applied the bounds testing (ARDL) approach for the period 1970–2008 to show that there is no Granger causality form FDI to economic growth in the short run. He supported that the idea that FDI can generate positive spillover externalities for the host economy is not automatic.

Literature examining the relationship between trade openness and economic growth also closely reflected the impact of imports and exports on economic growth (Chaudhary et al., 2007; Goh et al., 2017; Jawaid, 2014). Exports of goods and services are seen as a driver of economic and social development because of their ability to influence economic growth, and are subject to growth strategies adopted by developing countries. Indeed, as shown by Ref. (Goh et al., 2017) exports constitute an outlet for local goods and services, a source of foreign exchange inflows to cope with demand for imports and government revenues for the financing of the national economy. Similarly, a low level of export can be at the root of rising unemployment and poverty. A reduction in government revenue limits the import capacity of capital goods and the inputs needed for the productive activity, which could hinder economic growth. So contribution of trade openness on economic growth has been subject of many studies especially in developing countries. For example (Soltani, 2012), analyzed this issue in the case of Tunisia using OLS method over the period 1975–2009 to show that trade openness exert a long term significant and positive effect on economic growth. Similarly (Dahmani et al., 2022), studied the relationship between international trade and economic growth in Tunisia. They applied cross-section

augmented Autoregressive Distributed Lag (CS-ARDL) model and Granger causality test to a panel of 14 economic sectors over the period 1995–2018. They suggested that trade openness exert a positive significant effect on Tunisia's economic activity.

Despite the empirical literature on the relationship between remittances, FDI and trade openness and growth in many developing and emerging countries, especially in Asia, there is very little work on this issue in Tunisia. Even Works based on panel data including Tunisia are inconclusive or contradictory to draw clear economic and political implications. For this reason, we seek in this work to study the interaction between economic growth and the main external factors using the time series technique. By assessing the role of each factor, we can draw appropriate lessons and guidelines for policymakers to establish more effective programs to stimulate growth in such a country suffering from a high rate of underemployment. Since the revolution, Tunisia has experienced a difficult transition period with low levels of public and especially private investment. Our objective in this context is so to contribute to the enrichment of the existing economic literature, which is characterized by a divergence of empirical results concerning the potential determinants of economic growth. This study revolves around the concerns of Tunisia since the agreement with the IMF of 1986 known by the structural adjustment program whose main objectives are to attract FDI and benefit from international trade. However, Tunisia started to apply new legislation that favors FDI only since 1995, when adopting the Barcelona declaration and creating the foreign investment promotion agency (FIPA) (Belloumi, 2014). Since then, Tunisia has emphasized the importance of creating an environment conducive to attracting FDI, which could lead to technology transfer, create new jobs and increase production and exports. This study can also be considered relevant because Tunisia is an interesting example for other Arab and southern Mediterranean countries that have applied incentive programs to attract FDI and remittances.

3. Empirical evidence

3.1. Data and methodology

Our model is inspired from the endogenous growth theory developed by Refs. (Lucas, 1988; Romer, 1986; Romer, 1990) and (Grossman & Helpman, 1991) and initially proposed by Refs. (Arrow, 1962; Shell, 1966). The starting point of studies focusing on the determinants of economic growth such as FDI and trade openness in an open economy have focused on total

factor productivity, labor force and capital stock (Solow, 1956; Solow, 1957). In the neoclassical growth model, technology and labor are exogenous, and foreign capital inflows affect GDP per capita only in the short term (Zebregs, 1998). criticized the neoclassical model by testing alternative models with country-specific technologies and concluded that this type of model is not very useful. According to the new endogenous growth theory, total factor productivity is endogenously determined by economic and institutional factors. Technological progress and FDI have been considered to have a permanent effect on growth in the host country through technology transfer and spillover effects (Borensztein et al., 1998; De Mello Jr, 1997). FDI can stimulate knowledge transfers, both in terms of workforce training and skills acquisition and by introducing alternative management practices and better organizational arrangements. Trade openness promotes economic growth; exports can increase productivity and ease the country's foreign exchange constraints; imports can provide the country with advanced technology. Trade openness is also crucial to gain the potential impact of FDI on growth (Balasubramanyam et al., 1996). In addition, remittances can increase the stock of capital and employment in the host country. For these reason we introduced the variables FDI, remittances; import and export in the model to control for economic growth's determinants. We are limited to these factors in order to reduce the problem of inconsistency since are studying the nature of the link between certain factors and economic growth without having the interest to evaluate the exact effect of each factor. So, it is not required to take into account the interaction between the different explanatory variables and so to include other potential supplementary factors to get closer to reality.

In our study, the relationship between economic growth and its external determinants, namely, FDI, exports, imports and remittances is investigated in the case of Tunisia. We have employed annual time series data covering the period 1976 to 2017 taken from the World Development Indicators online database (WDI, 2018). The sample is carefully selected based on the data availability. From an econometric point of view, we have chosen a sufficiently long period in order to distinguish between the short term and the long term for a time series analysis of economic phenomena. From an economic point of view, this period is sufficiently extended to take into consideration the periods of structural adjustments adopted by the government during the 1980s and the policies of openness and liberalization of the 1990s. Also, our sample period covers the period of revolution and social protests of

the 2010s and the years that follow. We stopped in 2017 since there are no abnormal events that can cause economic shocks and structural breaks and there is no significant economic growth in the last period especially with the outbreak of corona-virus. We modified the model of (Barro, 1996) to include our variables of interest. The economic growth specification can be expressed as follows:

$$Growth = f(FDI, REM, EXP, IMP)$$

where:

- *Growth*: Annual Real GDP per capita growth (GDPC)
- *FDI*: Net inflow of Foreign Direct Investment as share of GDP
- *REM*: Remittances as share of GDP
- *EXP*: Exports as share of GDP
- *IMP*: Imports as share of GDP

We prove that economic growth is a function of foreign direct investment, remittances, exports and imports. In other words, this model suggests that FDI, REM, EXP and IMP might determinate economic growth. All variables were then transformed into natural logarithmic. The log-linear specification was intended to make the distribution of variables more symmetric, to reduce the influence of outlier's observations if they exists and make interpretation easy.¹

The log-linear model specification for the econometrics analysis can be shown as follows:

$$LGDP_t = \alpha_0 + \alpha_1 LFDI_t + \alpha_2 LREMT_t + \alpha_3 LEXP_t + \alpha_4 LIMP_t + \varepsilon_t ; t = 1976, \dots, 2017 \quad (1)$$

where, the slope coefficients α_1 , α_2 , α_3 and α_4 represent the long run elasticities estimates of real GDP per capita growth (*constant 2010US dollars*) with respect of FDI, remittances, exports and imports, respectively. L is the natural logarithm operator and ε represents the disturbance term assumed to be normally distributed. The subscript t refers to the time-period.

We apply the Autoregressive Distributed Lag (ARDL) bounds testing approach developed by Refs. (Pesaran & Shin, 1999; Pesaran et al., 2001) to establish the existence of possible long run or co-integration relationship between the variables. Indeed, compared to other co-integration procedure like (Engle & Granger, 1987; Johansen & Juselius, 1990) using the ARDL bounds testing approach, we can estimate both the short and long-run relationships simultaneously.

Our methodology needs many steps. At the first, we applied the (Bai & Perron, 1998; Bai & Perron, 2003a) breakpoints test to check for the existence of the number of breakpoints in the data. At the second step, we apply the (Clemente et al., 1998) unit root test with structural breakpoints checking the period and order of integration among the series. Thirdly, we are invited to examine the robustness of the co-integration relationship between the economic growth and external factor by applying such a co-integration test of (Hatemi-J, 2008) that accommodates double endogenous structural breaks in the series data. At the fourth step, we apply the ARDL bounds testing approach developed by Ref. (Pesaran et al., 2001). Finally, relevant post-estimation stability and diagnostic tests such as Ramsey-RESET, CUSUM, CUSUMQ, Jarque-Bera, Breuch-Godfrey and ARCH were employed. Details about different methodology are presented on the appendix.

3.2. Results and interpretations

In this section, we shall try to show our empirical findings concerning the relationship between external factor and economic growth in Tunisia's case between 1976 and 2017.

3.2.1. Descriptive analysis

Table 1 reports summary statistics of variables included in this work. We can conclude that all series are approximately normally distributed, as the value of Jarque-Bera test do not reject the null hypothesis of normality distribution of a variable. We can notice that on average imports exceed exports which justifies the chronic trade deficit recorded and the budgetary imbalances especially during the last years. Our results also show that on average Tunisians living abroad can cover the balance of payments deficit such that they provide about 20% of GDP (1.41 of 7.92). Our results also show that imports are the least volatile; on the other hand,

Table 1. Summary statistics and correlations.

	LGDP	LFDI	LEXP	LIMP	LREM
Obs.	42	42	42	42	42
Mean	7.9286	0.6850	3.7012	3.8290	1.4109
Std. Dev	0.2998	0.6236	0.1492	0.1351	0.1410
Min	7.4799	-0.5101	3.3702	3.5268	1.1168
Max	8.3765	2.2432	4.0192	4.0724	1.6154
J-Bera test	3.9325	0.1394	1.6314	0.6013	3.3785
LGDP	1.0000				
LFDI	0.3831	1.0000			
LEXP	0.7021	0.3114	1.0000		
LIMP	0.7150	0.3424	0.8459	1.0000	
LREM	0.5378	0.0147	0.0570	0.5830	1.0000

Source: Authors calculations.

¹ We can interpret the coefficients as elasticities.

Table 2. Variance inflation factor.

	Coefficient Variance	Centered VIF
C	1.0068	NA
LFDI	0.0031	1.2117
LIMP	0.2146	3.9426
LEXP	0.1615	3.6189
LREM	0.0827	1.6532

Source: Authors calculations.

FDIs are the most volatile. This table makes it possible to appreciate the role that remittances can play in rewarding capital flight in the event of negative shocks, given that the LFDI variable records negative minimum values involving the outflow of foreign funds.

Table 2 contains the result of the Variance Inflation Factor. Our results show that data are free of multicollinearity problem.

Fig. 1 illustrates the logarithmic trend of all variables used in the regression. It indicates that all variables are relatively stable over the sample period. But, we suspect that there is more than one structural breakpoints in the Data Generating Process (DGP) of the variables *GDP per capita, FDI, exports, imports and remittances*.

3.2.2. Unit root test

As a first step, the likely existence of structural breaks is addressed by using Bai-Perron test. Table 3 presents the results of the (Bai & Perron, 1998) test for structural regime shifts in the deterministic components of a univariate time series. In this study, we employed the (Bai & Perron, 2003a) algorithm to determine locations of structural changes. The

Table 3. Results of Bai-Perron multiple structural breaks test.

Variable	$WD_{max}^{0.05}$ Statistic	TB_1	TB_2	TB_3
LGDP	34.84	1987	1996	–
LFDI	46.50	1986	1992	2011
LREMT	33.40	1992	2001	–
LEXP	07.09	1988	2005	–
LIMP	27.62	2007	–	–

results obviously confirm our suspicion concerning presence of breaks in the structural relationship between economic growth and its external determinants variables in Tunisia throughout the period 1976 to 2017.

The $WD_{max}^{0.05}$ test the null hypothesis of no structural break. These statistics has been obtained by correcting the possible autocorrelation and/or heteroscedasticity through the quadratic spectral kernel with the bandwidth being selected according to Ref. (Andrews, 1991). TB_1 , TB_2 and TB_3 are the estimated time breaks according the modified Bayesian-Schwarz criterion (*LWZ criterion*).

We can verify this by computing the WD_{max} statistics. The second column of the table presents the WD_{max} (at 5% significance level), which clearly reject the null hypothesis of no breaks. To determine the number of breaks we employed a sequential examination of the $F_T(M, q)$ statistics. The structural breaks dates for each variable are reported in last three column of the table. Relatively, the results show that a different number of breaks, up to three, has been detected by the test statistics for all variables. Thus, it is necessary to consider the presence of these breaks to test for unit roots. The second step consists to investigate the period and order of

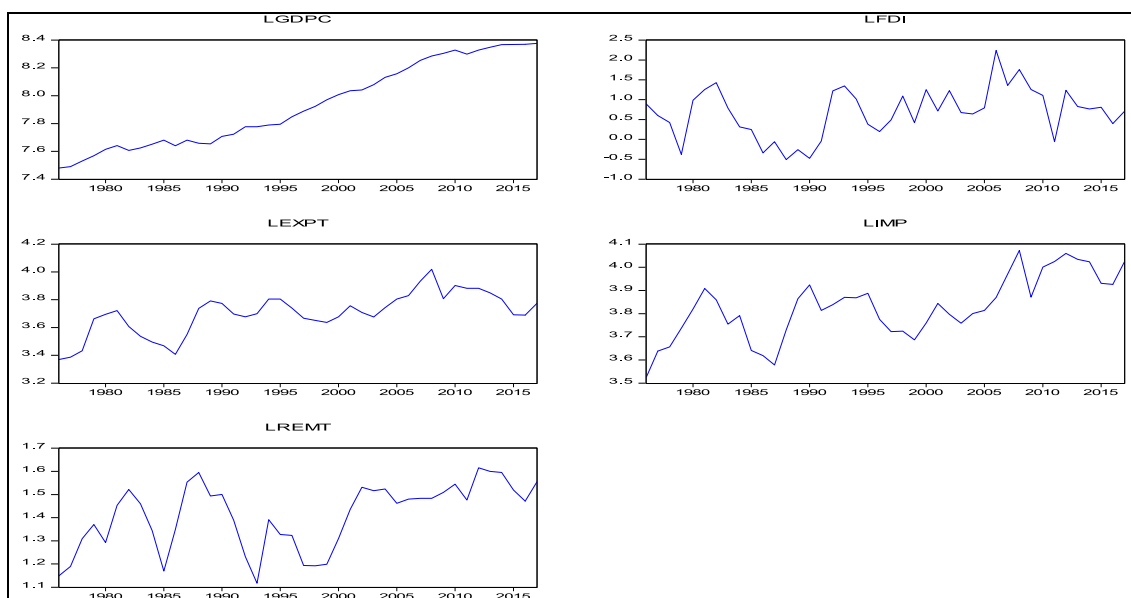


Fig. 1. Plots of data overview (1976–2017). Source: Authors calculation based on World Bank Online Database (2018).

Table 4. Results of CMR unit root tests with two changes in the mean.

Variable	Additive Outliers				Innovational Outliers			
	<i>t</i> -Stat	TB ₁	TB ₂	Decision	<i>t</i> -Stat	TB ₁	TB ₂	Decision
LGDP	-3.564	1993	2004	I (1)	-4.737	1988	1994	I (1)
LFDI	-4.951	1985	1989	I (1)	-5.298	1984	1990	I (1)
LRMT	-0.457	–	2001	I (1)	-5.543	1989	2000	I (0)
LEXPT	-5.831	1989	2008	I (0)	-5.720	1985	2002	I (0)
LIMP	-4.746	1985	2008	I (1)	-4.798	1986	2005	I (1)

TB₁ and TB₂ are the first and second optimal time breaks, respectively. The variables were tested for double structural breakpoints unit root tests using the CMR's test for additive outliers (which captures a sudden change) or innovational outliers (allowing for a gradual shift in the mean) in the series. The 5% critical value is (-5.490).

integration among the variables, the (Clemente et al., 1998) unit root tests have to be applied to all variables. This test considers the presence of two endogenous structural breaks in the underlying data set under the null hypothesis that series has unit root with structural breaks. The results of calculated statistical values are represented in Table 4.

Table 4 displays two parts one is *additive outliers'* model, which capture marginal change and the second, is innovative outlier model, which shows sudden and perpetual changes in data series. Looking at results, an *innovational outliers'* model seems to be relatively more appropriate in our case. Indeed, the persistent shocks that influenced the variables of interest for a longer period seems more likely in this context. Based on the calculated *t*-statistics, in column 1, of *innovational outliers* model, we cannot reject the null hypothesis that GDP per capita, FDI and imports are integrated I (1) at level in the presence of structural breaks, on the other hand, both remittances and exports are stationary at level I (0) in the presence of structural breaks. However, the CMR test provides that our selected variables used in the regression are mutually integrated, which support the use of the ARDL. Moreover, the test revealed the existence of two significant structural breaks for all series (e.g. 1984, 1988, 2000 and 2005). These likely dates are highly correlated to numerous structural political and economic events that occurred in Tunisia. The structural break in 1984 implies that the Tunisian economy continued to suffer from growing foreign debt and the foreign exchange crisis started in 1980, while it was up a little after the launch of the structural adjustment program in 1986 and the privatization program of 160 state-owned enterprises in 1987. The mid-1990s Tunisia entered into an "Association Agreement" with the European Union, which removed the tariff and barriers on goods. This is evident from the existence of structural breaks in 2000 and 2005. We find similar empirical results by using the (Lee & Strazicich, 2003) LM unit root

Table 5. Result of Hatemi-J co-integration test with double structural break (Model C/S).

	Estimated test value	TB ₁	TB ₂	Lag
<i>Panel A: Hatemi-J cointegration test statistics</i>				
ADF*	-6.522 ^a	1988	1996	7
Z _t *	-7.171 ^a	1988	1999	0
Z _a *	-46.988	1988	1999	0
<i>Panel B: Asymptotic Critical Values</i>				
	1%	5%	10%	
ADF*	-6.503	-6.015	-5.653	
Z _t *	-6.503	-6.015	-5.653	
Z _a *	-90.794	-76.003	-52.232	

Note: TB₁ and TB₂ are the first and second optimal time breaks, respectively. Critical values are for significance levels of 1%, 5% and 10% are obtained from the (Hatemi-J, 2008). (a), (b) and (c) indicate rejection of the null hypothesis at significance level for 1%, 5% and 10% respectively. The lag length was selected using Schwartz and Akaike information criteria with maximum lag equal to five. The (Hatemi-J, 2009) GAUSS module endogenously detects break dates.

test, which validate the consistency of the empirical analysis.²

3.2.3. Co-integration with two unknown structural breaks

After investigating the integration order of the series in presence of double unknown structural breaks, the next step consists at testing for the presence of long-run relationship between economic growth and its external determinants. In doing so, we apply the (Hatemi-J, 2008) co-integration test in presence of two unknown structural breaks.

The results from Ref. (Hatemi-J, 2008) co-integration test with break in level and slope is reported in Table 5. Since (Hatemi-J, 2008) suggests three residual based test statistics (namely the modified ADF (ADF*) test and the two modified Phillips (Z_a* and Z_t*) tests), our analysis will depend on Z_t* test statistics (Gregory & Hansen, 1996).³ As can be

² Results are available upon request from the authors.

³ (Gregory & Hansen, 1996) indicates that Z_t* is better than ADF* and Z_a* in term of power and size.

Table 6A. Selection of lag length criteria.

Lag Length Criteria						
Lag	LogL	LR	FPE	AIC	SBIC	HQIC
0	74.2434	–	1.8e-08	–3.6449	–3.4289	–3.5677
1	221.119	293.75	3.0e-11 ^d	–10.0589	–8.7661 ^d	–9.5989 ^d
2	238.315	34.393	4.8e-11	–9.6482	–7.2780	–8.8049
3	272.356	68.082	3.6e-11	–10.124	–6.67647	–8.8974
4	303.199	61.685 ^d	4.1e-11	–10.4315 ^d	–5.9066	–8.8216

Note: (^d) indicates lag order selected by the criterion. LR: sequential modified LR test statistic (each test at 5% level), FPE: Final prediction error, AIC: Akaike information criterion, SBIC: Schwarz-Bayesian information criterion and HQIC: Hannan-Quinn information criterion.

seen from the results reported in Table 5, the (Hatemi-J, 2008) test strongly reject the null hypothesis of no co-integration at the five percent significance level (*the estimated Z_t^* (–7.171) is higher than the critical value Z_t^* (–6.015) in absolute value*). In other words, the test supports the existence of long run relationship between economic growth, foreign direct investment, imports, exports and remittances. Moreover, the test proposes two unknown break dates, which very linked to several political and economic events that happened in Tunisia. The first date selected is 1988, which corresponds to the political regime change and the second date was to be at the 1999. Our guess is that this break is related to the government's success in the gradual liberalization of trade and manufacturing, which was started in 1996.

3.2.4. ARDL bound testing

Although the (Hatemi-J, 2008) co-integration test provides enough evidence for long run association between variables, we also prefer to apply the ARDL bound testing approach to co-integration to further confirm results reported in Table 5 and avoid criticism of using conventional co-integration tests that may have serious shortcomings (Shahbaz et al., 2017). As mentioned above, the variables are mutually integrated which support the use of ARDL specification. Therefore, we apply the ARDL bound testing approach to co-integration in the presence of

two structural breakpoints to examine both the long and short-run relationship between economic growth and external factors. We include two dummies variables (year 1988 “Dum88” and year 1999 “Dum99”) based on (Hatemi-J, 2008) test findings. Prior to performing co-integration analysis, we should determine the appropriate lag length of variables. The optimal lag length chosen will be used in the ARDL model specification. We can indicate that the ARDL specification is sensitive to lag order selection. Indeed (Lütkepohl, 2006), argues that the dynamic relationship between the series can be correctly captured if an appropriate lag order is selected. Table 6A indicated the lag length criteria. The optimal lag order of series used is being determined based on the Akaike Information Criterion (AIC) due to its superiority over the other lag criteria. From Table 6A we can indicate that (4) is the optimal lag length over the period 1976–2017. The results of ARDL bounds testing represented in Table 6B reveals that the calculated *F*-statistic (6.577) is greater than the asymptotic critical value (6.250) of the upper bound at one percent significance level generated by Ref. (Narayan, 2004a). This finding suggests the existence of co-integration relationship among variables. In light of the findings from the two co-integration tests namely the (Hatemi-J, 2008) test and ARDL bound test in presence of structural breakpoints, we can emphasize that there is a co-integration relationship among real GDP per capita growth and FDI, imports, exports and remittances in presence of structural change.

The existence of co-integration association among the variables brings us back to estimate long-run and dynamic short-run relationships between the variables. Table 6C reports the long-run coefficients from the ARDL estimates model.

3.2.5. Discussion on long run

The empirical findings in Table 6C indicate that foreign direct investment does not significantly linked with economic growth in Tunisia over the period 1976–2017. Several studies in the literature have shown a non-significant effect of FDI on

Table 6B. ARDL bounds testing to cointegration (LGDPC is the independent variable).

Model	Variables	Calculated F-statistics		Decision	
DUM88 and DUM99	LFDI, LIMP, LEXP, LREM	6.577 ^a		Cointegration	
Asymptotic Critical Value	1% Critical bounds	5% Critical bounds		10% Critical bounds	
	LB UB	LB UB	LB UB	LB UB	LB UB
T = 40	4.428 6.250	3.202 4.544	2.660 3.838		

Note: (^a) represent significance at 1% level. UB means Upper Bound and LB means Lower Bound. Asymptotic Critical Value for bounds test are from Ref. (Narayan, 2004a); case III restricted intercept and trend.

Table 6C. Econometric results for the long-run model (LGDP is the dependent variable).

Variables	Model with DUM88 and DUM99	
Optimal lag	ARDL (2, 4, 4, 4)	
	Coefficient	t-statistic
LFDI	0.0109	1.3899
LREM	-0.2978 ^c	-2.0748
LEXP	0.7021 ^a	4.5514
LIMP	-0.6573 ^b	-2.1930
R ²	0.998	—
F-Statistics	553.84 ^a	—
D.W	2.224	—

Note: (a), (b) and (c) represent significance at 1%, 5% and 10% level, respectively. To reduce possible effects of heteroscedasticity on inference we are employing the *White-Hinkley* method: heteroscedasticity-consistent standard error (HCSE) estimator of OLS parameter estimates, (Hinkley, 1977; White, 1980).

economic growth (Hermes & Lensink, 2003). More precisely, our results confirm finding of (Belloumi, 2014) studying relationship between FDI, trade openness and economic growth in Tunisia based on ARDL Bound testing without identifying break points. He contradicted widespread idea that FDI automatically leads to increased economic growth through positive spillover and externalities for the host countries. This was perhaps because the model omitted other important variables that enhance the relationship between FDI and economic growth. A growing body of literature has shown that developing countries (host countries) would benefit from FDI only if these countries guarantee certain favorable conditions for the entry of FDI. Two main conditions has been discussed in the literature, namely, a sufficient level of education (Borensztein et al., 1998) and quality of infrastructures (Görg & Greenaway, 2003) which affect the speed of adoption of new technology and experience of productivity gains. Since 2011, Tunisia experienced a period of crisis (political instability, terrorist threats and lack of confidence) because of the revolution which directly affects the entry of FDI. According to the Tunisian Agency for the Promotion of Foreign Investment (FIPA-Tunisia), Tunisia recorded a 28.8% drop in FDI in the first quarter of 2011 and a 31% drop in 2014 compared to 2010.

Further, several studies in the literature shows that remittance inflows, especially in foreign currencies, have positive effects on the economic growth of the recipient country by stimulating the investment activities such as (Fayissa & Nsiah, 2008) for the case of African countries (Vargas et al., 2009), for Asian Countries and Mundaca, 2009 for Latin America and the Caribbean region. In recent works (Jouini, 2015; Kouni, 2016), have found a significant

long run relationship between remittances and economic growth in Tunisia through boosting investment. In contrast to these two works, the long run findings from Table 6C revealed a significant inverse economic relationship between remittances and economic growth in Tunisia. The estimated coefficient of -0.297 indicated that workers' remittances negatively influence the GDP per capita growth in Tunisia. There are numerous technical and real explanations for this phenomenon. In technical term, we used a relatively large period and we took into account the existence of structural change in the regression. In real terms, we can explain this negative effect of remittances on growth in two ways. Firstly, Tunisian workers living abroad send their money to supports their families so for consumption and not for possible investment opportunities. Secondly, the Tunisian financial system is not sufficiently developed to play its real role by transferring funds to investment to provide more employment which boost therefore the economic growth.

Additionally, results exhibited a robust support for a negative economic association between the economic growth and imports in Tunisia. The calculated long-run coefficient of 0.657 indicated that foreign imports from abroad have a negative impact on economic growth. This result shows that Tunisian imports more consumption goods and not capital and technology goods. In theory and according to international trade economists, the importation is essential for economies that are in their first stages of development by transferring foreign new technology and innovations (Coe et al., 1997; Krueger, 1978; Mazumdar, 2001) and (Krishna et al., 2003). Indeed, if a country imports capital, intermediate, and technology goods (*i.e.* machines and equipment investment), then it is expected that imports would increase economic growth (De Long & Summers, 1991). Finally, the analyses provide a positive long run relationship between exports and economic growth. In the long run, one percent increase in exportation leads to 0.702% increase in per capita real GDP of Tunisia. Our findings are similar to those of (Jawaid, 2014) who find that exports have a positive influence on Pakistani's economic growth.

Regardless of the Tunisian government efforts to diversify their external markets and put an end to the European Union (EU) domination over trade activities since the Association Agreement between the EU and Tunisia, which entered into force in 1998, the EU remains the first destination for Tunisian exports especially for sales of industrial products. Recent statistics, according to the Tunisian Central Bank and the National Institute of Statistics,

Table 6D. Econometric results for the short-run error correction model (LGDP is the dependent variable).

Variables	Model_88 and 99	
Optimal lag	ARDL (2, 0, 4, 4, 4)	
	Coefficient	t-statistic
Panel (A)		
Δ LGDP _{t-1}	-0.2199	-1.4833
Δ LREM	-0.1391 ^a	-3.3662
Δ LREM _{t-1}	-0.0519	-1.6351
Δ LREM _{t-2}	0.0276	0.8918
Δ LREM _{t-3}	0.1138 ^a	3.1932
Δ LEXP	0.2669 ^a	4.1166
Δ LEXP _{t-1}	-0.2893 ^a	-3.9002
Δ LEXP _{t-2}	-0.1381 ^c	-1.9370
Δ LEXP _{t-3}	-0.1740 ^b	-2.6278
Δ LIMP	-0.1102 ^c	-1.8880
Δ LIMP _{t-1}	0.3910 ^a	4.6398
Δ LIMP _{t-2}	0.3529 ^a	4.2327
Δ LIMP _{t-3}	0.3248 ^a	4.6499
Intercept	5.1431 ^a	6.4255
Trend	0.0206 ^a	6.0662
DUM_88	-0.1606 ^a	-5.2830
DUM_99	-0.0151	-1.0009
ECT _{t-1}	-0.6610 ^a	-6.4115
Panel (B)		
\bar{R}^2	0.687	
$\chi^2_{Auto}(2)$	4.4538 (0.1079)	
$\chi^2_{Norm}(2)$	1.5246 (0.4665)	
$\chi^2_{ARCH}(1)$	0.3816 (0.5367)	
$F_{RESET}(1, 15)$	1.1965 (0.2913)	
CUSUM	Stable	
CUSUMQ	Stable	

Note: (a), (b) and (c) represent significance at 1%, 5% and 10% level, respectively. $\chi^2_{Auto}(2)$ is the Breuch-Godfrey serial correlation LM test; $\chi^2_{Norm}(2)$ is the Jarque-Bera normality test; $\chi^2_{ARCH}(1)$ is the ARCH test for heteroscedasticity and $F_{RESET}(1, 15)$ is the RAMSEY-RESET test for functional specification. Critical value for $\chi^2_{1-\alpha}(2)$ and $\chi^2_{1-\alpha}(1)$ are 5.99 and 3.84, respectively, with $\alpha = 5\%$. Value in parenthesis are p-values.

indicates that Arab Maghreb Union accounted for 9.5% of Tunisian exports in 2017 against 8.0% in 2008, up 18.75% and EU accounted for 74.3% of Tunisian exports in 2017 against 72.0% in 2008, up 3.19%. Recent years has shown the continued performance of exports in the manufacturing sectors following the acceleration in sales of the textile, clothing and leather sector (up 16.3% in 2017), the mechanical industry and electrical energy (up 20.4% in 2017) and other manufacturing industries (up 15.1% in 2017) as a result of improved foreign demand from the European and Asian countries.

The diversity of exports destination increased the inflow of foreign currency which increased current receipts and therefore the economic activity. According to the Central Bank, the exports in value has risen from 12054.9 MTD in 2004–27607.2 MTD in 2015, and foreign exchange has increased from 4760.3 MTD in 2004–14250.3 MTD in 2015.

3.2.6. Discussion on short run

We obtain the short run dynamic relationship by estimating the conditional ECM Eq. (7). From results Table 6D we obtain a statistically significant coefficient for the dummy of 1988. This structural change date is substantially related to the political and economic regime change. In this year, Tunisia solicited an extended credit facility mechanism from the IMF and the World Bank for which the removal and repayment of the installments. The main conditions imposed by the IMF's 1986 Stand-By Arrangement and subsequently by the 1988 Expanded Credit Facility Agreement are representative of the IMF's Structural Adjustment Program (SAP). It implies trade liberalization, more foreign direct investment, deepening financial sector, more flexible prices and withdrawal of the role of the State to give way to the private sector. In Panel (A) the results reported in Table 6D indicates that the impact of remittances (Δ LREM) and imports (Δ LIMP) on economic growth is negative and statistically significant at the 1% and 10% levels, respectively. However, the exports (Δ LEXP) have a positive and statistically significant impact on economic growth at the 1% level. Further, we also point out that there is no short run direct effect of FDI on economic growth. Our results supported conclusions of (Beloumi, 2014) who supported that there is no significant Granger causality ranging from FDI to economic growth in Tunisia during the period 1970–2008. In addition, Error Correction Term coefficient ($ECT_{t-1} = -0.661$) is negative and statistically significant at 1% level. This implies a relatively fast yearly speed correction towards the long run equilibrium path. In fact, 66.1% of last year's imbalances of GDP is corrected in the current year, implying that speed of adjustment is relatively fast.

3.2.7. Diagnostics tests

To ensure the goodness of fit of model, the diagnostic and stability tests are also showed. According the Panel (B) in Table 6D which presents the diagnostics and stability tests performed in Tunisia's growth model. The result of Breuch-Godfrey serial correlation LM test (4.453) and the ARCH test for heteroscedasticity (0.381) suggests that residuals are free from serial correlation and heteroscedasticity at 5% level, respectively. The Jarque-Bera test of residual normality corroborates the no reject of the null hypothesis that residuals are normally distributed at 5% level of significance. Further, the calculated Fisher statistic of RAMSEY-RESET test confirms a well specification of the ECM model. Additionally, the cumulative sum of residuals (CUSUM) and cumulative sum of square (CUSUMSQ) test are used for testing the stability of the short run model. The graphs

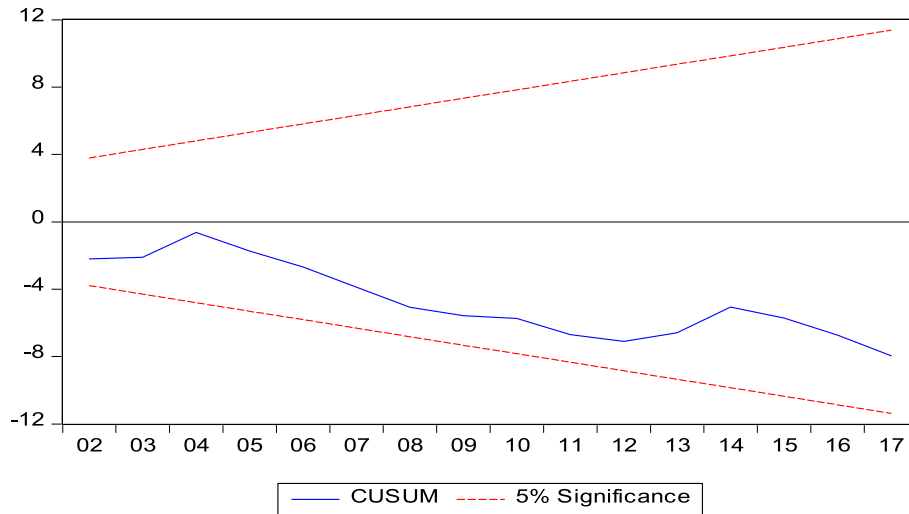


Fig. 2. Plot of cumulative sum of recursive residuals.

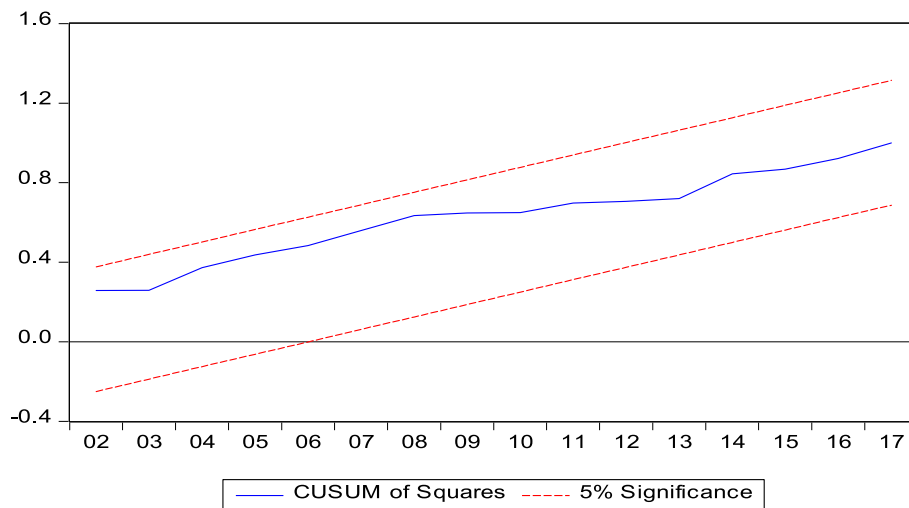


Fig. 3. Plot of cumulative sum of squares of recursive residuals.

of the CUSUM (Fig. 2) and CUSUMSQ (Fig. 3) statistics show that the line is well within the critical bounds of 5%, suggesting that, all coefficients in the ECM model are stable to any minor innovative shock over the sample period 1976–2017. Summing up, these tests validated that the calculated ECM equation did not have serious estimation issues.

4. Conclusion and recommendations

The main purpose of this work is to analyze how external factors effect economic growth in Tunisia during the period 1976–2017. The regression results express a negative relationship between remittances, imports and economic growth but no link between Foreign Direct Investment and economic activity both in the short and long run. The negative

result shows that a large part of imports are in consumer goods and no longer in capital and that the majority of remittances are used for non-productive purposes. In Tunisia, remittances are used for non-productive purposes and do not generate profits. In this context, the emphasis is placed on some negative effects of migration such that the brain drain depresses the average level of education and skills of workers in the countries of origin of immigrants. Thus, the moral hazard problem is one of the factors explaining the negative effect of remittances on economic growth such that the sending of funds reduces the motivation to look for work among the members of the beneficiary families, which reduces the economic activity. Thus, Foreign Direct Investments do not allow more economic growth in a significant way perhaps because

they require an infrastructure and a level of financial development allowing benefiting from technological transfers. Either way, the inflow of foreign capital appreciates the real exchange rate and lowers countries' trade competitiveness. So to deal with the negative effects of remittances, policy makers must convince both senders and recipients to invest in creative wealth projects. Therefore, the state must increase trade competitiveness to reduce the negative effect of the inflow of funds following the exchange appreciation and the decline in production by beneficiary families.

In summary, our results show that Tunisia's economic growth is ever insignificant or negatively affected by external factors especial by FDI and remittances. In other words, economic growth on such a country depends essentially of domestic funds. So, as economic implications of our findings policy-makers have to motivate more domestic capital investment, in one hand. In the other hand, the Tunisian government must make greater efforts to attract FDI through incentives such as rebuilding new confidence and dynamic climate of investment through political stability, legislative measures to ensure the security of foreign investors, and founding an appropriate physical and financial infrastructure. In addition, Tunisia needs more financial development to benefit from positive spillover and externalities that can be associated with FDI. Concerning trade openness Tunisian authority need to diversify exportation and select goods and services to import in order to reduce negative effect on current account.

Conflict of interest

There is no conflict of interest.

Appendix

Unit root tests

According to Refs. (Pesaran et al., 2001; Sam et al., 2019) the ARDL bounds test assumes that the dependent variable must be I (1) and regressors are purely I (0), purely I (1) or mutually co-integrated. Therefore, the objective is to ensure that the variables are not I (2) to avoid erroneous findings. In our study, we consider a relatively long period spread over 42 years. Throughout this period, Tunisia's economy has known several fluctuations mainly after 1986 and 2010. These economic and financial impacts reflect some structural changes, and it is important to consider these breaks points when performing unit root tests. In our knowledge, all the conventional standard unit root tests,

namely (Dickey & Fuller, 1979; Phillips & Perron, 1988; Ng & Perron, 2001; and Kwiatkowski et al., 1992), fail to detect structural break points in the series. These different tests provide spurious findings when they lack data about all possible structural break points in the series observations. However, the presence of these breaks may affect the relationship between the variables of the regression.

Structural breakpoints test: Bai-Perron procedure

When we are unable to easily examine the potential existence of structural break in the dataset we should use the (Bai & Perron, 1998; Bai & Perron, 2003a; Bai & Perron, 2006) multiple breakpoint test.⁴ The advantage of this test is that selects the break dates endogenously. This methodology allows detect the presence of multiple unknown structural breaks under very general conditions for errors and regressors to allow for non-stationary variables (Bai & Perron, 2003a). adopted the following linear regression model with m breaks and $m + 1$ regimes.

$$y_t = x_t' \beta + z_t' \delta_i + \varepsilon_t, \quad t = TB_{i-1}, \dots, TB_i \text{ and } i \\ = 1, 2, \dots, m + 1 \quad (2)$$

When TB_i (Time Break) representing the period in which the break appears, m is the number of breaks, y_t is the dependent variable, x_t and z_t are the covariates, β and δ_i are the corresponding vectors of coefficients and ε the error term.

To determine the existence of breaks, we can use the UD_{max} (unweighted maximized statistic) and WD_{max} (weighted maximized statistic) tests that examine for the null hypothesis of no structural breaks versus the presence of an unknown number of breaks. Hence, we can verify this by using only the value of WD_{max} defined as follows:

$$WD_{max} F_T(M, q) = \max_{1 \leq m \leq M} \frac{c(q, \alpha, 1)}{c(q, \alpha, m)} \sup_{(\lambda_1, \dots, \lambda_m) \in \Lambda_\varepsilon} F(\lambda_1, \dots, \lambda_m; q) \quad (3)$$

Where $c(q, \alpha, m)$ is the asymptotic critical value of the test $F_T(\hat{\lambda}_1, \dots, \hat{\lambda}_m; q)$ for a significance level α, ε is a trimming parameter equal to (h/T) where T is the sample size and h is the minimal permissible length of a segment.⁵

⁴ Several studies using macroeconomic time series asks whether structural changes have occurred at exogenously determined break or whether a single change has happened at an unknown break date. In this case, the basic (Chow, 1960) test and (Andrews et al., 1996) test could be applied.

⁵ For more details, see Ref. (Bai & Perron, 2003a).

Clemente-Montanes-Reyes unit root tests

A known obvious weakness of the (Zivot & Andrews, 1992) unit root tests is its inability to deal with more than single structural breakpoint in a time series. In order to address this issue, we shall use the (Clemente et al., 1998) unit root tests (CMR).⁶ This test contains information about more than one unknown structural breaks occurring in the data during the sample period, which may occur under both the assumptions of stationarity or non-stationarity. CMR proposed tests that would provide for two models. The first is labeled additive outliers (AO) and captures marginal change in a series due to a transitory shock or to an anomaly in the data. The second is labeled innovational outliers (IO) allowing for a gradual shift in time of the mean of the series.

We recall that if the structural break occurs abruptly, one assumes an additive outlier model (AO model), if it occurs gradually, than an innovation outlier model (IO model). The two events specify the transition mechanism of the structural break.

We explore a simple model with double-break additive outliers as employed in Baum et al. 1999.

$$y_t = \alpha + \theta_1 DU_{1t} + \theta_2 DU_{2t} + \eta_{1t} \quad (4)$$

Where DU_t is a dummy variable with $DU_{it} = 1$ for $TB_i < t$ ($i = 1, 2$) and zero otherwise. TB_1 and TB_2 are the breakpoints dates. $\{y_t\}$ is the variable to be studied, while α and θ are the parameters of regression. η_{1t} is the white noise error term. This model assumes

$$\begin{aligned} \Delta LGDPC_t = & \alpha_0 + \alpha_1 T + \alpha_2 DUM^{TB} + \lambda_1 LGDPC_{t-1} + \lambda_2 LFDI_{t-1} + \lambda_3 LREMT_{t-1} \\ & + \lambda_4 LEXP_{t-1} + \lambda_5 LIMP_{t-1} + \sum_{i=1}^p \delta_i \Delta LGDPC_{t-i} + \sum_{j=0}^q \beta_j \Delta LFDI_{t-j} \\ & + \sum_{i=0}^q \theta_j \Delta LREMT_{t-j} + \sum_{j=0}^q \omega_j \Delta LEXP_{t-j} + \sum_{j=0}^q \pi_j \Delta LIMP_{t-j} + \varepsilon_t ; \\ & t = 1976, \dots, 2017 \end{aligned} \quad (6)$$

double shifts in the level of the DGP of the series.

The equivalent form for the innovational outlier model in this context could be:

$$y_t = \alpha + \theta_1 DU_{1t} + \theta_2 DU_{2t} + \omega_1 DT_{1t} + \omega_2 DT_{2t} + \rho y_{t-1} + \eta_{2t} \quad (5)$$

Where DT_{it} is a dummy variable with $DT_{it} = 1$ if $t = TB_i + 1$ and zero otherwise ($i = 1, 2$). η_{2t} is the white noise term.

This model expresses the shocks to the series as having the same ARMA process as other shocks to the model. A significant estimate of ρ ($|\rho| < 1$) will provide evidence against $I(1)$ null hypothesis.

ARDL bounds test

Several studies in the literature shows that conventional tests techniques for co-integration have low power and provide spurious results in the presence of a regime shift in data that is not taken into account (Gregory & Hansen, 1996; Uddin et al., 2013). Therefore, this study uses the Autoregressive Distributed Lag (ARDL) bounds testing approach developed by Refs. (Pesaran & Shin, 1999; Pesaran et al., 2001) to test for existence of a possible long-run or co-integration relationship between economic growth and external factor with presence of structural breakpoints in the Tunisian data. However, according to Ref. (Pesaran & Shin, 1999) this methodology provides more consistent empirical findings in cases of small and finite sample size and generally provides unbiased estimates in long-run model, even in presence of the problem of endogeneity. Our econometric model of the ARDL and its associated unrestricted equilibrium correction formulation can be expressed as the following:

When $\Delta \equiv 1 - L$ is the first difference operator and α_0 is the drift component. DUM^{TB} is a dummy for structural breakpoints. Here p and q signifies the maximum lag length⁷. The ε represent the

⁶ The authors extend the work of (Perron & Vogelsang, 1992) to the case where the variable exhibits double structural breaks in the underlying data set.

⁷ The long run relationship between the variables can be estimated after the selection of the optimal structural lag-length using Akaike information criterion (AIC).

error term that is assumed to be normally distributed. The first expression on the right-hand side corresponds to the long run relationship between the series. The second part on the right-hand side represents the short run dynamics of the model.

ARDL co-integration test

To capture the existence of co-integration relationship a Wald-test (F-Statistic) is computed from an OLS regression of Eq. (6). The null hypothesis of no co-integration is tested by restricting the parameters attached along with lagged levels of the variables to zero ($H_0 : \lambda_1 = \lambda_2 = \lambda_3 = \lambda_4 = \lambda_5 = 0$) against the alternative hypothesis which states the presence of a long run relationship. ($H_1 : \lambda_1 \neq \lambda_2 \neq \lambda_3 \neq \lambda_4 \neq \lambda_5 \neq 0$).

To estimate Eq. (6) we apply the OLS technique. This estimation provides a test statistic which can be compared to two sets of asymptotic *critical value bounds* given by Ref. (Pesaran et al., 2001). According to these authors, the lower *bound critical value* assumed that the regressors are I (0), while the upper *bound critical value* assumed that the regressors are I (1). Thus, if the *Wald or F-statistic* is greater than the upper *bound critical value*, the null hypothesis of no long run relationship can be rejected, meaning that the variables are co-integrated. Alternatively, when the *Wald or F-statistic* is smaller than the lower *bound critical value*, the null hypothesis is accepted, meaning that there is no co-integration among the variables of the model. If the sample test statistic falls inside these two bounds, inference is inconclusive.⁸ In such an inconclusive case, it is preferable to establish the co-integration relationship is by applying the ECM generated by the long-run estimated parameters in ARDL model (Bahmani-Oskooee & Nasir, 2004).

One main overall objective of the ARDL approach application is to develop the conditional error correction model (ECM) to identify short run dynamics. The short run expression involves the error correction term *i.e.* ECT_{t-1} which tests the speed of convergence of short run disequilibrium towards the long run equilibrium. Based on Eq. (6) the conditional error correction model below required for the short run result can be expressed as follows:

$$\begin{aligned} \Delta LGDPC_t = & \alpha_0 + \alpha_1 T + \alpha_2 D^{TB} + \sum_{i=1}^p \delta_i \Delta LGDPC_{t-i} \\ & + \sum_{j=0}^q \beta_j \Delta LFDI_{t-j} + \sum_{j=0}^q \omega_j \Delta LIMP_{t-j} \\ & + \sum_{i=0}^q \theta_j \Delta LREMT_{t-j} + \varphi ECT_{t-1} + \varepsilon_i; \\ & t = 1976, \dots, 2017 \end{aligned} \quad (7)$$

Where δ , β , ω and θ represent the short-run coefficient and φ is the speed of convergence. ECT is the error correction term which derived from the residuals of Eq. (6). The coefficient of ECT (speed of convergence φ) is expected to be significant and negatively associated with the dependent variable.

Hatemi-J co-integration with double regime shifts

Once the long run relationship between variables using the ARDL approach is estimated, it is recommended to check whether this co-integration relationship is robust. Like unit root tests, standard co-integration tests mostly used in the literature, namely (Engle & Granger, 1987; Granger, 1981; Granger, 1983) and (Johansen, 1991) do not take into account for a possible existence of structural regimes in long run relationship. However, when one or more structural breaks exist in the data, these standard co-integration tests may not be acceptable and a co-integration test with structural regimes shifts should be performed (Gregory & Hansen, 1996; Westerlund & Edgerton, 2007).

Building on (Gregory & Hansen, 1996; Hatemi-J, 2008) presented co-integration test accounting for double structural break in the data.⁹ As we mentioned, the (Hatemi-J, 2008) residual based-test of co-integration is an extend procedure of (Gregory & Hansen, 1996) method that allows for a single structural shifts in three alternative models: in the level (model C), in level shift with trend (model C/T) and in the level and slope coefficients (model C/S) (Hatemi-J, 2008). considers only the model (C/S) in which double endogenous breaks affect both the constant and the slopes coefficients and he proposed the following equation:

$$\begin{aligned} y_t = & \alpha_0 + \alpha_1 D_{1t} + \alpha_2 D_{2t} + \beta'_0 x_t + \beta'_1 D_{1t} x_t \\ & + \beta'_2 D_{2t} x_t + u_t; \quad t = 1, \dots, n \end{aligned} \quad (8)$$

Where D_{1t} and D_{2t} are *dummy* variables, y_t the dependent variable ($LGDPC$) and x_t a vector of

⁸ Since our sample size is not very large, we use (Narayan, 2004a) critical values. Thus, calculated F-statistics will be compared to these critical values.

⁹ (Gregory & Hansen, 1996 test employed only for one endogenous structural break detected in the data.

independent variables (*LFDI*, *LEXPT*, *LIMP* and *LREMT*) defined as:

$$D_{it} = \begin{cases} 0 & \text{if } t \leq [n\tau_i] \\ 1 & \text{if } t > [n\tau_i] \end{cases}; \text{ with } \tau_i \in (0, 1) \text{ and } i = 1, 2$$

Where the unknown parameters τ_1 and τ_2 refers to the timing of the first and second breaks dates, respectively. The two brackets “[.]” denotes the integer part.

To test the null hypothesis of no co-integration (Hatemi-J, 2008), suggests three residual based test statistics (commonly used) namely the modified augmented Dickey–Fuller (ADF*) test (suggested by Ref. (Engle & Granger, 1987) and the two modified Phillips (Z_a^* and Z_t^*) tests (suggested by Ref. (Phillips, 1987):

$$\begin{cases} ADF^* = \inf_{(\tau_1, \tau_2) \in T} ADF(\tau_1, \tau_2) \\ Z_t^* = \inf_{(\tau_1, \tau_2) \in T} Z_t(\tau_1, \tau_2) \\ Z_a^* = \inf_{(\tau_1, \tau_2) \in T} Z_a(\tau_1, \tau_2) \end{cases}$$

Where the set T can be any compact subset of $(0, 1)$: $T = (0.15n ; 0.8n)$.

Once the co-integration relationship is confirmed, long run and short run coefficient are estimated with the ARDL procedure.

Stability and diagnostic tests

Several model stability and residuals diagnostic tests were conducted in this study to investigate the robustness of the ARDL long run model and ECM. The *RAMSEY-REST* test is considered to examine the estimated ARDL model specification and the *CUSUM* and *CUSUMSQ* tests developed by Ref. (Brown et al., 1975) can be employed to investigate the stability of the ARDL parameters. In addition, residuals diagnostics tests such as *Jarque-Bera* test, *Breuch- Godfrey* LM test and *ARCH* test are also performed to examine the normality distribution, the serial correlation and the heteroscedasticity, respectively.

References

- Almfraji, M., & Almsafir, K. M. (2014). Foreign direct investment and economic growth literature review from 1994 to 2012. *Procedia-Social and Behavioral Sciences*, 129, 206–213.
- Andrews, D. W. K., Lee, L., & Ploberger, W. (1996). Optimal change point tests for normal linear regression. *Journal of Econometrics*, 70, 9–38.
- Andrews, D. W. K. (1991). Heteroscedasticity and autocorrelation consistent covariance matrix estimation. *Econometrica*, 59, 817–858.
- Arrow, K. J. (1962). Economic welfare and the allocation of resources to invention. In R. R. Nelson (Ed.), *The rate and direction of economic activity*. NY: Princeton University Press.
- Bahadir, B., Chatterjee, S., & Lebesmuehlbacher, T. (2018). The macroeconomic consequences of remittances. *Journal of International Economics*, 111(C), 214–232.
- Bahmani-Oskooee, M., & Nasir, A. B. M. (2004). ARDL approach to test the productivity bias hypothesis. *Review of Development Economics*, 8, 483–488.
- Bai, J., & Perron, P. (1998). Estimating and testing linear models with multiple structural changes. *Econometrica*, 66, 47–78.
- Bai, J., & Perron, P. (2003a). Computation and analysis of multiple structural change models. *Journal of Applied Econometrics*, 18, 1–22.
- Bai, J., & Perron, P. (2006). Multiple structural change models: a simulation analysis. In D. Corbae, S. Durlauf, & B. E. Hansen (Eds.), *Econometric theory and practice: frontiers of analysis and applied research* (pp. 212–237). Cambridge, U.K: Cambridge University Press.
- Balasubramanyam, V. N., Salisu, M. A., & Sapsford, D. (1996). Foreign direct investment and growth in EP and IS countries. *Economic Journal*, 106, 92–105.
- Barajas, A., Chami, R., Fullenkamp, C., Montiel, P., & Gapan, M. T. (2009). Do workers' remittances promote economic growth?. In *IMF working paper*, 09/153. Washington, DC: International Monetary Fund.
- Barro, R. J. (1996). *Determinants of economic growth: a cross-country empirical study*. National Bureau of Economic Research. Working Paper: 5698.
- Baum, C. F., Barkoulas, J. T., & Caglayan, M. (1999). Long memory or structural breaks: can either explain non stationary exchange rates under the current float? *Journal of International Financial Markets, Institutions and Money*, 9(4), 359–376.
- Belloumi, M. (2014). The relationship between trade, FDI and economic growth in Tunisia: an application of the autoregressive distributed lag model. *Economic Systems*, 38, 269–287.
- Borensztein, E., De Gregorio, J., & Lee, J.-W. (1998). How does foreign direct investment affect economic growth? *Journal of International Economics*, 45(2), 115–135.
- Brown, R. L., Durbin, J., & Evans, J. M. (1975). Techniques for testing the consistency of regression relations over time. *Journal of Royal Statistical Society*, 37, 149–192.
- Chaudhary, M. S., Shirazi, N. S., & Chaudhary, M. A. S. (2007). Trade policy and economic growth in Bangladesh: a revisit. *Pakistan Economic and Social Review*, 45(1), 1–26.
- Chen, H., & Jayaraman, T. (2016). Role of financial sector in the remittances-growth nexus in Fiji. *Remittances Review, Transnational Press London*, 1(1), 17–36.
- Chow, G. (1960). Test of equality between sets of coefficients in two linear regressions. *Econometrica*, 28(3), 591–605.
- Clemente, J., Montanes, A., & Reyes, M. (1998). Testing for a unit root in variables with a double change in the mean. *Economics Letters*, 59(2), 175–182.
- Coe, D. T., Helpman, E., & Hoffmaister, A. W. (1997). North-south R&D spillovers. *Economic Journal, Royal Economic Society*, 107(440), 134–149.
- Dahmani, M., Mabrouki, M., & Ben Youssef, A. (2022). 2022. *ICT, trade openness and economic growth in Tunisia: what is going wrong? Economic Change and Restructuring*. <https://doi.org/10.1007/s10644-022-09388-2>
- De Long, J. B., & Summers, L. H. (1991). Equipment investment and economic growth. *The Quarterly Journal of Economics, Oxford University Press*, 106(2), 445–502.
- De Mello, L. R., Jr. (1997). Foreign direct investment in developing countries: a selective survey. *Journal of Development Studies*, 34(1), 1–34.
- Dickey, D. A., & Fuller, W. A. (1979). Distribution of the estimators for autoregressive time series with a unit root. *Journal of the American Statistical Association*, 74(366), 427–431.
- Easterly, W., King, R., Levine, R., & Rebelo, S. (1994). *Policy, technology adoption and growth*. Cambridge, MA: MIT Press. NBER working paper No. 4681.

- Engle, R., & Granger, C. (1987). Co-integration and error correction: representation, estimation and testing. *Econometrica*, 55, 251–276.
- Fayissa, B., & Nsiah, C. (2008). *The impact of remittances on economic growth and development in Africa*. Working Paper Series, Middle Tennessee State University.
- Goh, S. K., Sam, S. Y., & McNown, R. (2017). Re-examining foreign direct investment, exports, and economic growth in Asian economies using a bootstrap ARDL test for co-integration. *Journal of Asian Economics*, 51, 12–22 (C).
- Görg, H., & Greenaway, D. (2003). *Much ado about nothing? Do domestic firms really benefit from foreign direct investment?*, IZA discussion papers 944. Institute of Labor Economics (IZA).
- Granger, C. W. J. (1981). Some properties of time series data and their use in econometric model specification. *Journal of Econometrics*, 16(1), 121–130.
- Granger, C. W. J. (1983). *Co-integrated variables and error-correcting models*. UCSD Discussion. Paper 83-13.
- Gregory, A. W., & Hansen, B. E. (1996). Residual-based tests for co-integration in models with regime shifts. *Journal of Econometrics*, 70, 99–126.
- Grossman, G., & Helpman, E. (1991). *Innovation and growth in the global economy*. Cambridge, MA: MIT Press.
- Hatemi-J, A. (2008). Tests for co-integration with two unknown regime shifts with an application to financial market integration. *Empirical Economics*, Springer, 35(3), 497–505.
- Hatemi-J, A. (2009). CItest2b: GAUSS module to implement tests for co-integration with two unknown structural breaks, Statistical Software Components G00006. Boston College Department of Economics.
- Hermes, N., & Lensink, R. (2003). Foreign direct investment, financial development and economic growth. *Journal of Development Studies*, 40(1), 142–163.
- Hinkley, D. V. (1977). Jackknifing in unbalanced situations. *Technometrics*, 19, 285–292.
- Imai, K. S., Gaiha, R., Ali, A., & Kaicker, N. (2014). Remittances, growth and poverty: new evidence from Asian countries. *Journal of Policy Modeling*, 36, 524–538.
- Jawaid, S. T. (2014). Trade openness and economic growth: a lesson from Pakistan. *Foreign Trade Review*, 49(2), 193–212.
- Johansen, S., & Juselius, K. (1990). Maximum likelihood estimation and inference on cointegration— with applications to the demand for money. *Oxford Bulletin of Economics and Statistics*, 52(2), 169–210.
- Johansen, S. (1991). Estimation and hypothesis testing of Co-integration vectors in Gaussian vector autoregressive models. *Econometrica*, 59(6), 1551–1580.
- Jouini, J. (2015). Economic growth and remittances in Tunisia: bi-directional causal links. *Journal of Policy Modeling*, 37(2), 355–373.
- Khathlan, A. K. (2012). The link between remittances and economic growth in Pakistan: a boon to economic stability. *British Journal of Economics, Management & Trade*, 2(3), 167–185.
- Kouni, M. (2016). Remittances and growth in Tunisia: a dynamic panel analysis from a sectoral database. *Journal of Emerging Trends in Economics and Management Sciences*, 7(5), 342–351.
- Krishna, K., Ozyildirim, A., & Swanson, N. J. (2003). Trade, investment and growth nexus, analysis and prognosis. *Journal of Development Economics*, 70(2), 479–499.
- Krueger, A. O. (1978). *Foreign trade regimes and economic development: liberalization attempts and consequences*. Cambridge, MA: Ballinger for the National Bureau of Economic Research.
- Kumar, R. R. (2013). Remittances and economic growth: a study of Guyana. *Economic Systems*, 37(3), 462–472.
- Kwiatkowski, D., Phillips, P. C. B., Schmidt, P., & Shin, Y. (1992). Testing the null hypothesis of stationarity against the alternative of a unit root. *Journal of Econometrics*, 54(1–3), 159–178.
- Lee, J., & Strazicich, M. C. (2003). Minimum Lagrange Multiplier unit root test with two structural breaks. *Review of Economics and Statistics*, 85(4), 1082–1089.
- Lucas, R. (1988). On the mechanics of economic development. *Journal of Monetary Economics*, 22(1), 3–42.
- Lütkepohl, H. (2006). Structural vector autoregressive analysis for co-integrated variables. *ASTA Advances in Statistical Analysis, Springer; German Statistical Society*, 90(1), 75–88.
- Makun, K. K. (2018). Imports, remittances, direct foreign investment and economic growth in republic of the Fiji Islands: an empirical analysis using ARDL approach. *Kasetsart Journal of Social Sciences*, 39(3), 439–447.
- Marques, A. C., Fuinhas, J. A., & Pais, D. F. (2018). Economic growth, sustainable development and food consumption: evidence across different income groups of countries. *Journal of Cleaner Production*, 196, 245–258.
- Mazumdar, J. (2001). Imported machinery and growth in LDCs. *Journal of Development Economics*, 65(1), 209–224.
- Meyer, D., & Shera, A. (2017). The impact of remittances on economic growth: an econometric model. *Economia*, 18(2), 147–155.
- Mundaca, G. (2009). Remittances, financial market development, and economic growth: the case of Latin America and the caribbean. *Review of Development Economics*, 13(2), 288–303.
- Narayan, P. K., & Smyth, R. (2004). Temporal causality and the dynamics of exports, human capital and real income in China. *International Journal of Applied Economics*, 1(1), 24–45.
- Narayan, P. K. (2004a). *Reformulating critical values for the bounds F-statistics approach to co-integration: an application to the tourism demand model for Fiji*, Department of Economics Discussion Papers No.02/04. Melbourne, Australia: Monash University.
- Ng, S., & Perron, P. (2001). LAG length selection and the construction of unit root tests with good size and power. *Econometrica*, 69(6), 1519–1554.
- Nourzad, F., & Powel, J. (2003). Openness, growth, and development: evidence from a panel of developing countries. *Scientific Journal of Administrative Development*, 1(1), 72–94.
- Nwaogu, G. U. J., & Ryan, J. M. (2015). FDI, foreign aid, remittances and economic growth in developing countries. *Review of Development Economics*, 19(1), 100–115.
- Perron, P., & Vogelsang, T. (1992). Nonstationarity and level shifts with an application to purchasing power parity. *Journal of Business and Economic Statistics*, 10, 301–320.
- Pesaran, M. H., & Shin, Y. (1999). In S. Strom (Ed.), *An autoregressive distributed lag modelling approach to cointegration analysis*, *Econometrics and economic Theory in the 20th century: the ragnar frisch centennial symposium* (pp. 1–31). Cambridge University Press.
- Pesaran, M. H., Shin, Y., & Smith, R. J. (2001). Bounds testing approaches to the analysis of level relationships. *Journal of Applied Econometrics*, 16(3), 289–326.
- Phillips, P. C. B., & Perron, P. (1988). Testing for unit roots in time series regression. *Biometrika*, 75(2), 335–346.
- Phillips, P. (1987). Time series regression with a unit root. *Econometrica*, 55(2), 277–301.
- Romer, P. M. (1986). Increasing returns and long-run growth. *Journal of Political Economy*, 94(5), 1002–1037.
- Romer, P. M. (1990). Endogenous technological change. *Journal of Political Economy*, 98, 71–102.
- Sam, C. Y., McNown, R., & Goh, S. K. (2019). An augmented autoregressive distributed lag bounds test for co-integration. *Economic Modelling*, 80(C), 130–141.
- Shahbaz, M., Solarin, S. A., Hammoudeh, S., & Shahzad, S. J. H. (2017). Bounds testing approach to analyzing the environment Kuznets curve hypothesis with structural breaks: the role of biomass energy consumption in the United States. *Energy Economics*, 68(C), 548–565.
- Shell, K. (1966). Toward a theory of inventive activity and capital accumulation. *American Economic Review*, 56(2), 62–68.
- Solow, R. M. (1956). A contribution to the theory of economic growth. *The Quarterly Journal of Economics*, 70(1), 65–94.
- Solow, R. (1957). Technical change and the aggregate production function. *Review of Economics and Statistics*, 39(3), 312–320.
- Soltani, H. (2012). Trade openness and economic growth: the case of Tunisia. *Economics Bulletin*, 32(4), 1–38.

- Todaro, M. P., & Smith, S. C. (2006). *Economic development*. London, UK: Pearson Addison Wesley.
- Uddin, S., Sjo, B., & Shahbaz, M. (2013). The causal nexus between financial development and economic growth in Kenya. *Economic Modeling*, 35, 701–707.
- Vargas, S. C., Jha, S., & Sugiyatro, G. (2009). *Remittances in Asia: implications for the fight against poverty and the pursuit of economic growth*. Manila: Asian Development Bank Economics Working Paper Series. n° 189.
- Westerlund, J., & Edgerton, D. L. (2007). New improved tests for co-integration with structural breaks. *Journal of Time series Analysis*, 28(2), 188–224.
- White, H. (1980). A heteroskedasticity-consistent covariance matrix estimator and a direct test for heteroskedasticity. *Econometrica*, 48, 817–838.
- World Bank. (2018). *World bank open data* [online]. Available at: <https://data.worldbank.org/> . (Accessed 28 June 2018).
- Zebregs, H. (1998). *Can the neoclassical model explain the distribution of foreign direct investment across developing countries?* IMF working paper. WP/98/139.
- Zivot, E., & Andrews, D. (1992). Further evidence of great crash, the oil price shock and unit root hypothesis. *Journal of Business and Economic Statistics*, 10, 251–270.